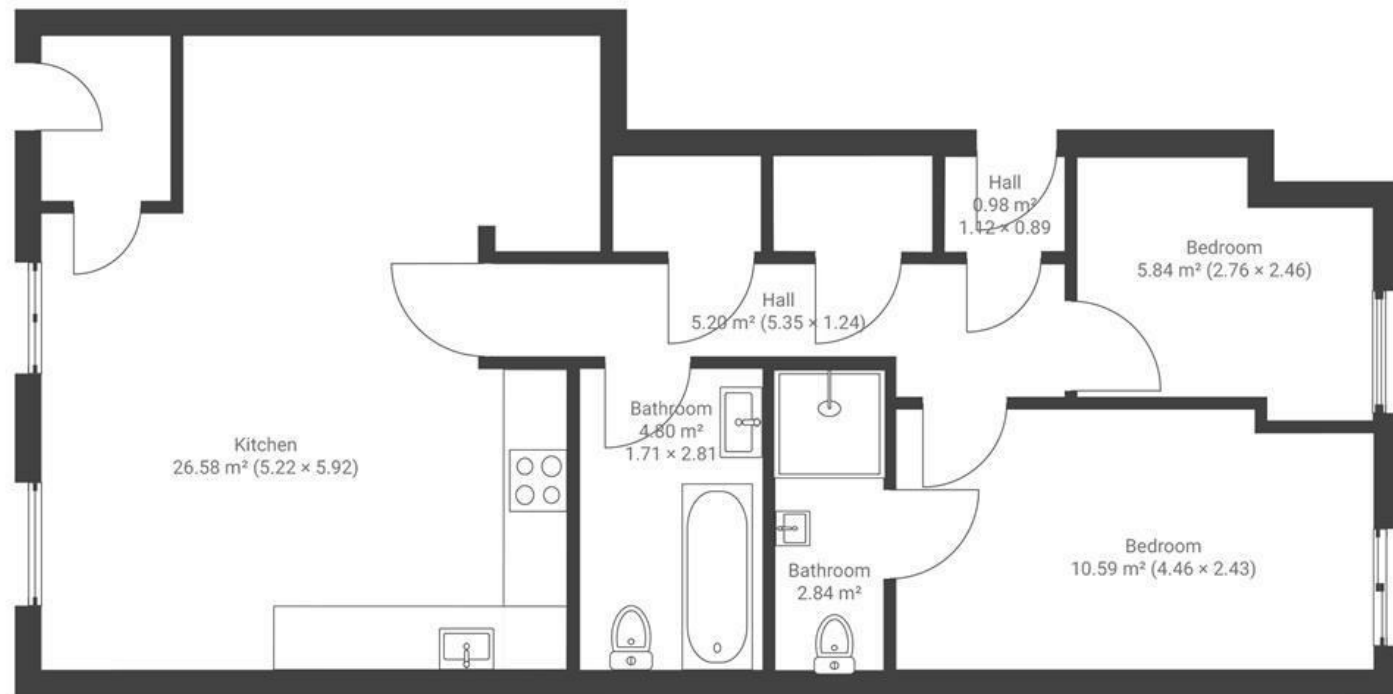


Pritchard Street

ST PAULS

APPROXIMATE FLOOR AREA

75 SQM / 807 SQFT



Boardwalk

Pritchard Street , BRISTOL



£300,000



BS2 8RH



2 Bedrooms



2 Bathrooms

"We've loved calling this place home for seven years. For us, it's been about socialising and entertaining. The open-plan living space is perfect for hosting, and the central location has been perfect for friends and family to visit. When people ask what we love about living in Bristol, we always say it's the walkability, amazing food, and live music. We've made the most of all of this on the doorstep, Crafty Egg for brunch, the Canteen for drinks and music, and Artist Residence across the road."

